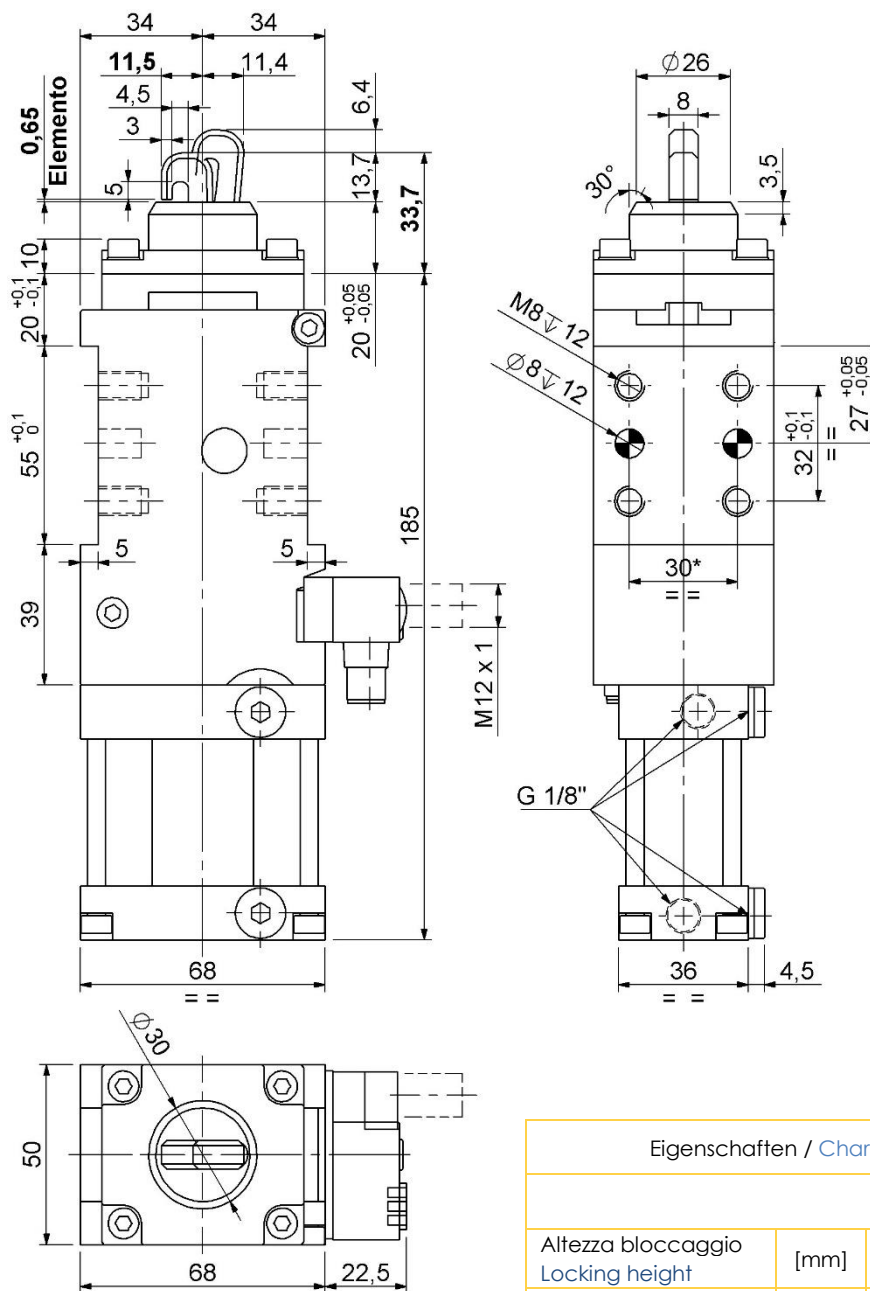


DCA40GI – 09676 XXX

Sub-Level, D. 40, customizzazione
Sub-Level, D. 40, customization



Eigenschaften / Characteristic:

| | | |
|--|------|--------------------------|
| Altezza bloccaggio Locking height | [mm] | 20 + 0,65 = 20,65 |
| Spessore elemento Element thickness | [mm] | 0,65 -0,1/+0,3 |

Dimensioni standard: vedi catalogo
Standard dimensions: see the catalog

| Modello Type | Alesaggio cilindro Cylinder bore | Forza max. di chiusura (5 bar) Max. clamping force (5bar) | Peso Weight | Pressione max d'esercizio Max. working pressure | Forza di ritegno Holding force |
|-----------------|--|--|----------------|--|-----------------------------------|
| | [mm] | [daN] | [Kg] | [bar] | [daN] |
| DCA40GI - ... | 40 | 110 | ~ 1,9 | 6 | 200 |